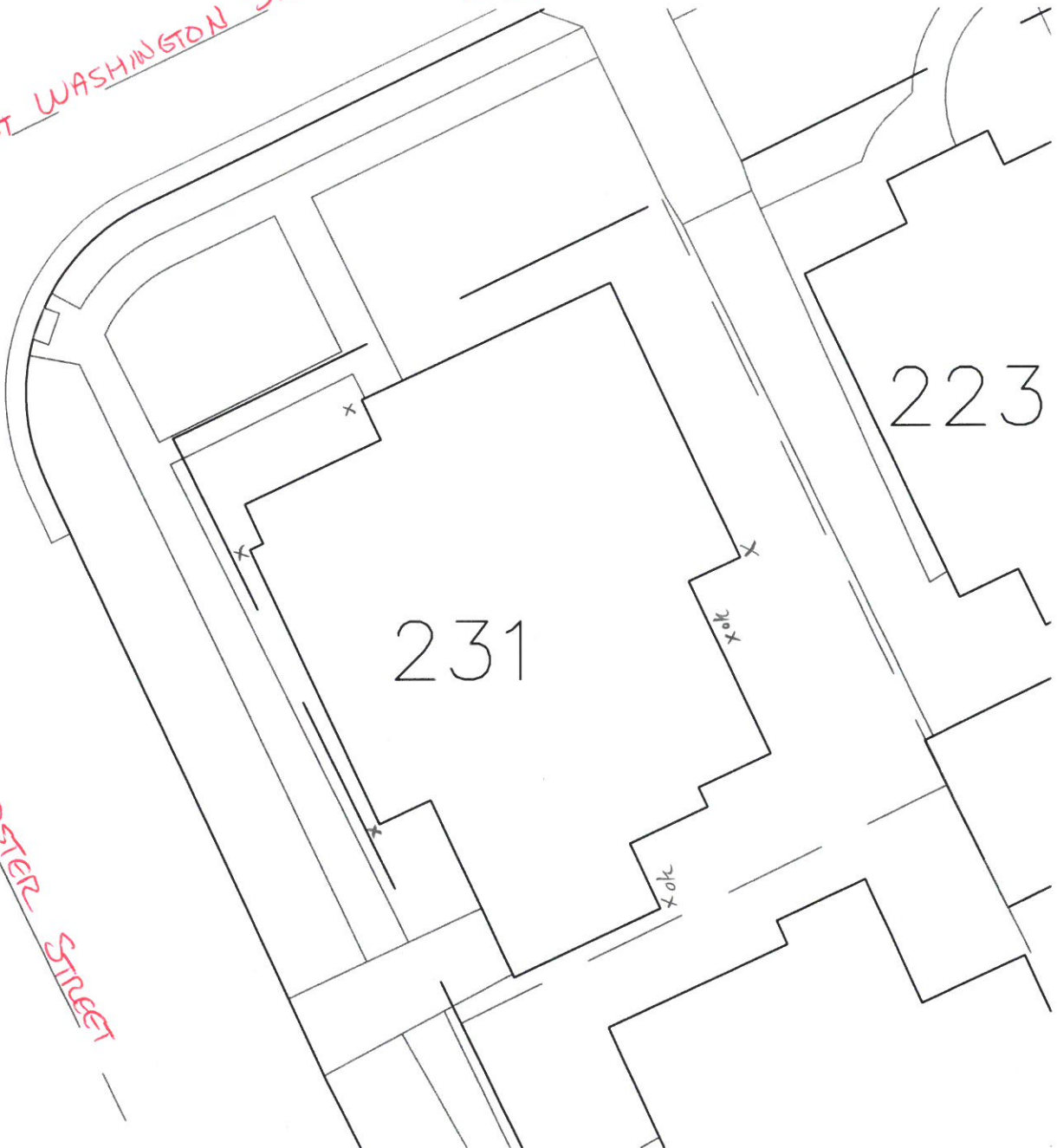


DATE: 10-9-12
INSPECTED BY: MARTY CROSSLAND

WEST WASHINGTON STREET

N
1"=20'



223

231

WEBSTER STREET

INVESTIGATION OF ILLEGAL DOWNSPOUT CONNECTIONS AT 231 W. WASHINGTON ST.
WORK DONE EARLIER IN 2012 SEPARATED + BYPASSED EXISTING SANITARY
FROM THE SOUTHEAST CORNER OF THE HOUSE TO THE STREET. ALL REMAINING
FOOTER TILES + DOWNSPOUT CONNECTIONS GO TO SUMP PIT IN BASEMENT AND
OUTLETS ON GROUND SURFACE IN FRONT OF HOUSE. THEREFORE THE EXISTING
CONNECTIONS ARE EXEMPT + COMPLY.